

Funding the Future

Israel and its allies - including the UK - are going to...

Published: January 13, 2026, 8:58 am

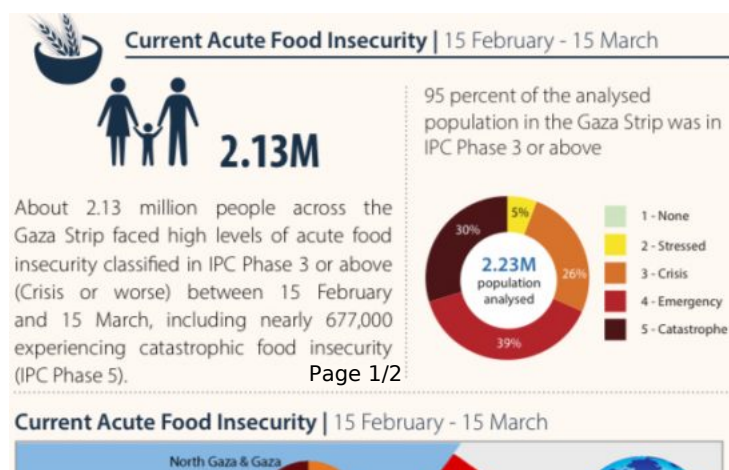
The [IPC describes itself](#) as follows in its website:

The Integrated Food Security Phase Classification (IPC) is an innovative multi-partner initiative for improving food security and nutrition analysis and decision-making. By using the IPC classification and analytical approach, Governments, UN Agencies, NGOs, civil society and other relevant actors, work together to determine the severity and magnitude of acute and chronic food insecurity, and acute malnutrition situations in a country, according to internationally-recognised scientific standards.

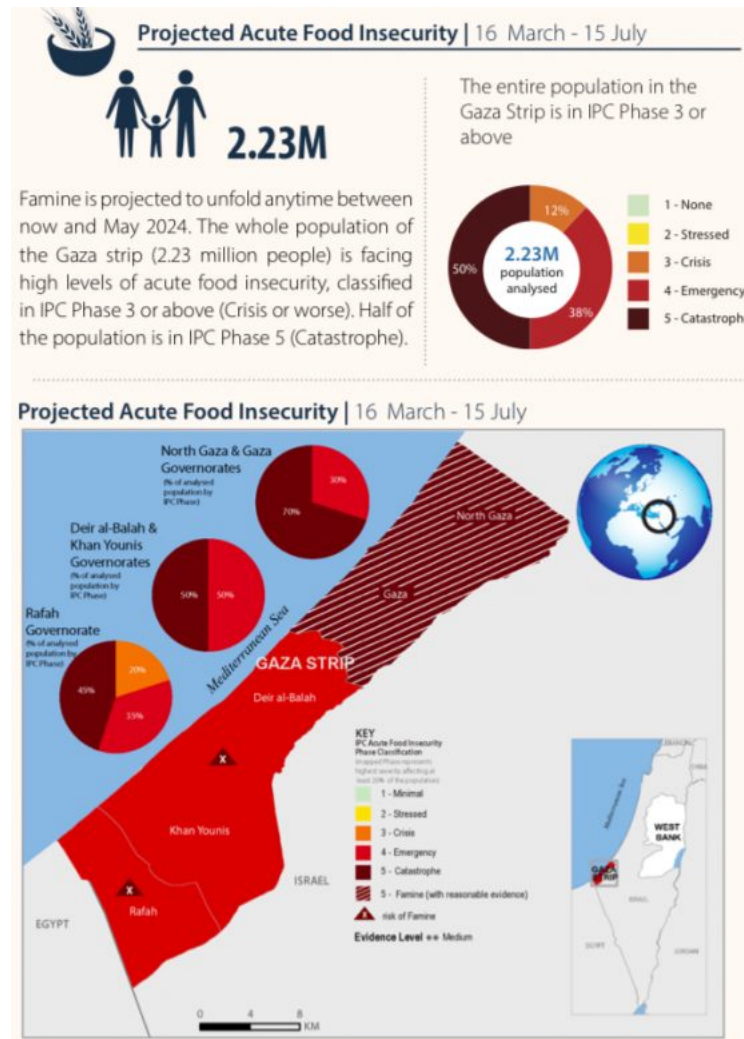
The [IPC has issued a report on Gaza](#), based on its scale of crisis assessment, which is as follows:

Acute Food Insecurity Phase name and description
IPC Phase 1 (None/Minimal): Households are able to meet essential food and non-food needs without engaging in atypical and unsustainable strategies to access food and income.
IPC Phase 2 (Stressed): Households have minimally adequate food consumption but are unable to afford some essential non-food expenditures without engaging in stress-coping strategies.
IPC Phase 3 (Crisis): Households either have food consumption gaps that are reflected by high or above-usual acute malnutrition; or are marginally able to meet minimum food needs but only by depleting essential livelihood assets or through crisis-coping strategies.
IPC Phase 4 (Emergency): Households either have large food consumption gaps that are reflected in very high acute malnutrition and excess mortality; or are able to mitigate large food consumption gaps but only by employing emergency livelihood strategies and asset liquidation.
IPC Phase 5 (Catastrophe/ Famine): Households have an extreme lack of food and/or cannot meet other basic needs even after full employment of coping strategies. Starvation, death, destitution and extremely critical acute malnutrition levels are evident. For famine classification, area needs to have extremely critical levels of acute malnutrition and mortality.

They say the situation in Gaza in the last month was as follows:



And then they note that they expect things to change as follows over the next few months:



Israel controls food supply into Gaza. No one else can.

Israel is not permitting sufficient food into Gaza. As a result 50 per cent of its population now face famine. Most of the rest face a food crisis.

International law does not permit Israel to do this. Its actions are clearly illegal. But countries like the UK and USA permit it by supplying the arms Israel needs to crush Gaza and impose this famine.

It is my hope that not just those in Israel imposing this famine should be punished, but so too should those in this and other countries that let it happen, knowing it was going on.